

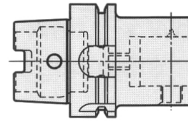
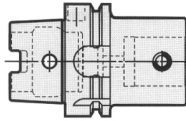


SUCO - Ihr Lieferant für original
Feinbohreinheiten (Stand 2006)

Werkzeugaufnahmen/ Adapter (ABS[®], Mod-Flex, WFU[®])

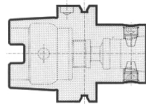
HSK-A Kegel/ HSK-A Taper

Shaft DIN 69893



ABS [®]	EURO
HSK-A50-ABS 25-50	200,00
HSK-A50-ABS 32-50	200,00
HSK-A50-ABS 40-60	200,00
HSK-A50-ABS 50-70	205,00
HSK-A63-ABS 25-50	214,00
HSK-A63-ABS 32-50	214,00
HSK-A63-ABS 40-60	216,00
HSK-A63-ABS 50-70	222,00
HSK-A63-ABS 63-80	226,00
HSK-A63-ABS 80-80	241,00
HSK-A100-ABS 25-60	259,00
HSK-A100-ABS 32-60	259,00
HSK-A100-ABS 40-80	262,00
HSK-A100-ABS 50-80	268,00
HSK-A100-ABS 63-80	275,00
HSK-A100-ABS 80-90	289,00
HSK-A100-ABS 100-100	303,00

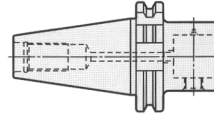
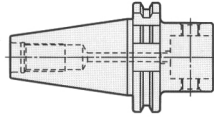
Mod-Flex	EURO
HSK-A50-MF 25-50	130,00
HSK-A50-MF 32-50	130,00
HSK-A50-MF 40-60	130,00
HSK-A50-MF 50-70	133,00
HSK-A63-MF 25-50	139,00
HSK-A63-MF 32-50	139,00
HSK-A63-MF 40-60	140,00
HSK-A63-MF 50-70	144,00
HSK-A63-MF 63-80	147,00
HSK-A63-MF 80-80	157,00
HSK-A100-MF 25-60	168,00
HSK-A100-MF 32-60	168,00
HSK-A100-MF 40-80	170,00
HSK-A100-MF 50-80	174,00
HSK-A100-MF 63-80	179,00
HSK-A100-MF 80-90	188,00
HSK-A100-MF 100-100	197,00



WFU [®]	EURO
HSK-A50-WFU 24-50	138,00
HSK-A50-WFU 32-50	138,00
HSK-A50-WFU 40-60	138,00
HSK-A50-WFU 50-65	140,00
HSK-A63-WFU 63-80	142,00
HSK-A63-WFU 24-50	144,00
HSK-A63-WFU 32-50	144,00
HSK-A63-WFU 40-55	144,00
HSK-A63-WFU 50-65	146,00
HSK-A63-WFU 63-70	148,00
HSK-A100-WFU 24-60	168,00
HSK-A100-WFU 32-60	168,00
HSK-A100-WFU 40-60	168,00
HSK-A100-WFU 50-70	168,00
HSK-A100-WFU 63-75	168,00
HSK-A100-WFU 80-75	172,00

Werkzeugaufnahmen/ Adapter (ABS®, Mod-Flex)

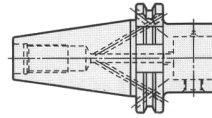
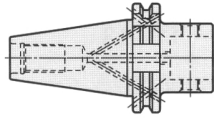
Shaft DIN 69871
Form AD



ABS®		EURO		Mod-Flex		EURO	
GID40M-ABS 25-50		197,00		GID40M-MF 25-50		118,00	
GID40M-ABS 32-50		197,00		GID40M-MF 32-50		118,00	
GID40M-ABS 40-50		197,00		GID40M-MF 40-50		118,00	
GID40M-ABS 50-50		197,00		GID40M-MF 50-50		118,00	
GID40M-ABS 63-90		200,00		GID40M-MF 63-90		120,00	
GID50M-ABS 32-60		224,00		GID50M-MF 32-60		134,00	
GID50M-ABS 40-60		224,00		GID50M-MF 40-60		134,00	
GID50M-ABS 50-60		224,00		GID50M-MF 50-60		134,00	
GID50M-ABS 63-60		226,00		GID50M-MF 63-60		136,00	
GID50M-ABS 80-70		233,00		GID50M-MF 80-70		140,00	

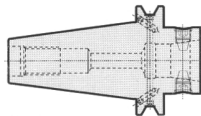
Werkzeugaufnahmen/ Adapter (ABS[®], Mod-Flex, WFU[®])

Shaft DIN 69871
Form B



ABS [®]	EURO
GID40M-ABS 25-50.C	218,00
GID40M-ABS 32-50.C	218,00
GID40M-ABS 40-50.C	218,00
GID40M-ABS 50-50.C	218,00
GID40M-ABS 63-90.C	221,00
GID50M-ABS 32-60.C	250,00
GID50M-ABS 40-60.C	250,00
GID50M-ABS 50-60.C	250,00
GID50M-ABS 63-60.C	253,00
GID50M-ABS 80-70.C	258,00

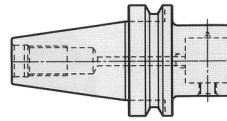
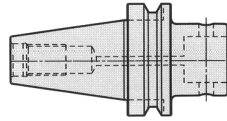
Mod-Flex	EURO
GID40M-MF 25-50.C	131,00
GID40M-MF 32-50.C	131,00
GID40M-MF 40-50.C	131,00
GID40M-MF 50-50.C	131,00
GID40M-MF 63-90.C	133,00
GID50M-MF 32-60.C	150,00
GID50M-MF 40-60.C	150,00
GID50M-MF 50-60.C	150,00
GID50M-MF 63-60.C	152,00
GID50M-MF 80-70.C	155,00



WFU [®]	EURO
GID40M-WFU 24-40.C	112,00
GID40M-WFU 32-40.C	112,00
GID40M-WFU 40-40.C	112,00
GID40M-WFU 50-45.C	112,00
GID40M-WFU 63-65.C	115,00
GID50M-WFU 32-40.C	136,00
GID50M-WFU 40-40.C	136,00
GID50M-WFU 50-45.C	136,00
GID50M-WFU 63-45.C	138,00
GID50M-WFU 80-55.C	144,00

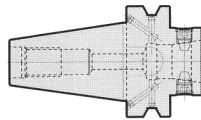
Werkzeugaufnahmen/ Adapter (ABS®, Mod-Flex, WFU®)

Shaft Japan Norm BT



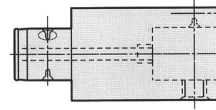
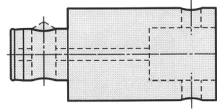
ABS®	EURO
GBT40M-ABS 25-60	198,00
GBT40M-ABS 32-60	198,00
GBT40M-ABS 40-60	198,00
GBT40M-ABS 50-60	198,00
GBT40M-ABS 63-70	201,00
GBT50M-ABS 32-70	226,00
GBT50M-ABS 40-70	226,00
GBT50M-ABS 50-70	226,00
GBT50M-ABS 63-80	230,00
GBT50M-ABS 80-100	233,00

Mod-Flex	EURO
GBT40M-MF 25-60	119,00
GBT40M-MF 32-60	119,00
GBT40M-MF 40-60	119,00
GBT40M-MF 50-60	119,00
GBT40M-MF 63-70	121,00
GBT50M-MF 32-70	136,00
GBT50M-MF 40-70	136,00
GBT50M-MF 50-70	136,00
GBT50M-MF 63-80	138,00
GBT50M-MF 80-100	140,00



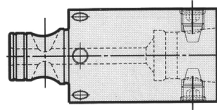
WFU®	EURO
GBT40M-WFU 24-45.C	112,00
GBT40M-WFU 32-45.C	112,00
GBT40M-WFU 40-45.C	112,00
GBT40M-WFU 50-50.C	112,00
GBT40M-WFU 63-60.C	115,00
GBT50M-WFU 24-45.C	136,00
GBT50M-WFU 32-45.C	136,00
GBT50M-WFU 40-55.C	136,00
GBT50M-WFU 50-65.C	136,00
GBT50M-WFU 63-70.C	138,00
GBT50M-WFU 80-70.C	144,00

Verlängerungen/ Extension (ABS®, Mod-Flex, WFU®)



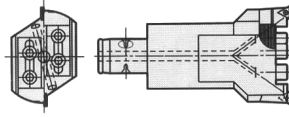
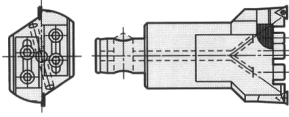
ABS®	EURO
V-ABS 25-40	129,00
V-ABS 25-80	142,00
V-ABS 32-50	136,00
V-ABS 32-80	140,00
V-ABS 40-60	143,00
V-ABS 40-100	149,00
V-ABS 50-80	159,00
V-ABS 50-120	175,00
V-ABS 63-60	179,00
V-ABS 63-100	186,00
V-ABS 63-160	201,00
V-ABS 80-60	212,00
V-ABS 80-100	219,00
V-ABS 80-160	242,00

Mod-Flex	EURO
V-MF 25-40	81,00
V-MF 25-80	90,00
V-MF 32-50	86,00
V-MF 32-80	88,00
V-MF 40-60	90,00
V-MF 40-100	94,00
V-MF 50-80	100,00
V-MF 50-120	110,00
V-MF 63-60	113,00
V-MF 63-100	117,00
V-MF 63-160	127,00
V-MF 80-60	134,00
V-MF 80-100	138,00
V-MF 80-160	153,00



WFU®	EURO
V-WFU 24-40	105,00
V-WFU 24-80	110,00
V-WFU 32-50	105,00
V-WFU 32-80	110,00
V-WFU 40-50	109,00
V-WFU 40-100	112,00
V-WFU 50-50	112,00
V-WFU 50-100	120,00
V-WFU 63-60	115,00
V-WFU 63-100	125,00
V-WFU 80-60	121,00
V-WFU 80-100	133,00

TWINBORE Zweischneider/ TWINBORE 2-Blade Boring Heads (ABS®, Mod-Flex, WFU®)

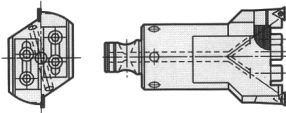


ABS®	EURO
------	------

MTP - 28-100-ABS 25	379,00
MTP - 36-100-ABS 32	388,00
MTP - 50-100-ABS 40	406,00
MTP - 78-100-ABS 50	432,00
MTP - 105-100-ABS 63	478,00
MTP - 135-100-ABS 30	558,00
MTP - 190-100-ABS 80	690,00
MTP - 245-100-ABS 80	989,00
MTP - 300-100-ABS 80	1.266,00

Mod-Flex	EURO
----------	------

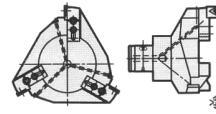
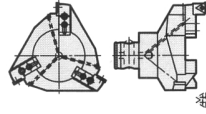
MTP - 28-100-MF 25	265,00
MTP - 36-100-MF 32	272,00
MTP - 50-100-MF 40	284,00
MTP - 78-100-MF 50	302,00
MTP - 105-100-MF 63	335,00
MTP - 135-100-MF 30	391,00
MTP - 190-100-MF 80	483,00
MTP - 245-100-MF 80	692,00
MTP - 300-100-MF 80	886,00



WFU®	EURO
------	------

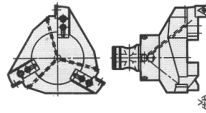
MTP - 28-100-WFU 24	303,00
MTP - 36-100-WFU 32	310,00
MTP - 50-100-WFU 40	325,00
MTP - 78-100-WFU 50	346,00
MTP - 105-100-WFU 80	382,00
MTP - 135-100-WFU 80	446,00
MTP - 190-100-WFU 80	552,00
MTP - 245-100-WFU 80	791,00
MTP - 300-100-WFU 80	1.013,00

TRIBORE Dreischneider/ TRIBORE 3-Blade Boring Heads (ABS[®], Mod-Flex, WFU[®])



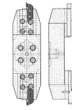
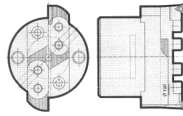
ABS [®]	EURO
MDP - 48-100-ABS 32	591,00
MDP - 56-100-ABS 40	603,00
MDP - 64-100-ABS 40	625,00
MDP - 78-100-ABS 50	655,00
MDP - 100-100-ABS 63	700,00
MDP - 125-100-ABS 30	759,00
MDP - 155-100-ABS 80	820,00
MDP - 185-100-ABS 80	865,00
MDP - 215-100-ABS 80	956,00

Mod-Flex	EURO
MDP - 48-100-MF 40	414,00
MDP - 56-100-MF 50	422,00
MDP - 64-100-MF 63	438,00
MDP - 78-100-MF 63	469,00
MDP - 100-100-MF 80	490,00
MDP - 125-100-MF 80	531,00
MDP - 155-100-MF 80	574,00
MDP - 185-100-MF 80	606,00
MDP - 215-100-MF 80	669,00



WFU [®]	EURO
MDP - 48-100-WFU 40	473,00
MDP - 56-100-WFU 50	482,00
MDP - 64-100-WFU 63	500,00
MDP - 78-100-WFU 63	524,00
MDP - 100-100-WFU 80	560,00
MDP - 125-100-WFU 80	607,00
MDP - 155-100-WFU 80	656,00
MDP - 185-100-WFU 80	692,00
MDP - 215-100-WFU 80	765,00

TWINBORE Zweischneider/ TWINBORE 2-Blade Boring Heads



	EURO
--	------

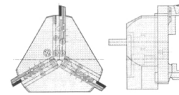
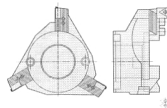
MTP-190-120	848,00
MTP-245-120	942,00
MTP-300-125	1.171,00

	EURO
--	------

MTP-355-160*	616,00
MTP-520-160*	1.613,00
MTP-685-160*	1.824,00
MTP-850-160*	2.066,00

* In obigen Preisen sind die Werkzeugkassetten nicht enthalten. TWINBORE - Schneidträger müssen separat bestellt werden.

TRIBORE Dreischneider/ TRIBORE 3-Blade Boring Heads



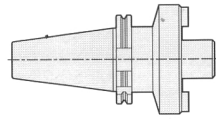
	EURO
--	------

MTP-215-100	916,00
MTP-245-100	1.178,00
MTP-300-100	1.501,00

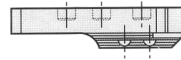
	EURO
--	------

MDP-355-160*	1.571,00
MDP-520-160*	1.959,00
MDP-685-185*	2.198,00
MDP-850-185*	2.962,00

* In obigen Preisen sind die Werkzeugkassetten nicht enthalten. TRIBORE - Schneidträger müssen separat bestellt werden.

Werkzeugaufnahmen/ Adapter DIN 2202


	EURO
GID 50M-MA 60-70	140,00
GBT 50M-MA 60-80	140,00
HSK A100-MA 60-80	154,00

Werkzeugkassetten/ Cassette


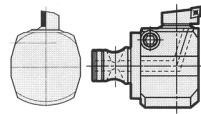
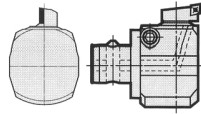
	EURO
MTP-355-25.02	232,00

Schneidenträger/ Insert Holders


	EURO
MTP - 28-1CC	112,00
MTP - 28-107CC	112,00
MTP - 28-107CC10	112,00
MTP - 28-1TL	112,00
MTP - 28-107TL	112,00
MTP - 28-1TC15	112,00
MTP - 28-1EV	112,00
MTP - 28-107EV	112,00
MTP - 28-1EV10	112,00
MTP - 36-1CC	114,00
MTP - 36-107CC	114,00
MTP - 36-107CC10	114,00
MTP - 36-1TL	114,00
MTP - 36-107TL	114,00
MTP - 36-1TC15	114,00
MTP - 36-1EV	114,00
MTP - 36-107EV	114,00
MTP - 36-1EV10	114,00
MTP - 50-1CC	130,00
MTP - 50-107CC	130,00
MTP - 50-107CC10	130,00
MTP - 50-1TL	130,00
MTP - 50-1VL	130,00
MTP - 50-1TC	130,00
MTP - 50-107TC	130,00
MTP - 50-1TC15	130,00
MTP - 50-1SC10	130,00
MTP - 50-1EV	130,00
MTP - 50-107EV	130,00
MTP - 50-1SV10	130,00

	EURO
MTP - 75-1CC	152,00
MTP - 75-107CC	152,00
MTP - 75-107CC10	152,00
MTP - 75-1TL	152,00
MTP - 75-1VL	152,00
MTP - 75-1TC	152,00
MTP - 75-107TC	152,00
MTP - 75-1TC15	152,00
MTP - 75-1SC10	152,00
MTP - 75-1EV	152,00
MTP - 75-107EV	152,00
MTP - 75-1SV10	152,00
MTP - 135-1TL	178,00
MTP - 135-107TL	178,00
MTP - 135-1VL	178,00
MTP - 135-1TC	178,00
MTP - 135-107TC	178,00
MTP - 135-1TC15	178,00
MTP - 135-1SC10	178,00
MTP - 135-1EV	178,00
MTP - 135-107EV	178,00
MTP - 28-1SC	126,00
MTP - 36-1SC	130,00
MTP - 50-1SC	144,00
MTP - 75-1SC	166,00
MTP - 135-1SC	192,00
MTP - 75-M032	255,00
MTP - 135-M052	322,00

Feinbohrstangen/ Fine Boring Bars (ABS®, Mod-Flex, WFU®)

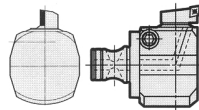


ABS®	EURO
------	------

GA 23A-60-ABS 25	323,00
GA 27A-60-ABS 25	298,00
GA 36A-60-ABS 32	342,00
GA 46A-60-ABS 40	372,00
GA 53A-60-ABS 40	372,00
GA 67A-60-ABS 50	408,00
GA 93A-60-ABS 63	467,00
GA 131A-60-ABS 63	541,00
GA 169A-60-ABS 63	648,00
GA 188A-60-ABS 63	715,00

Mod-Flex	EURO
----------	------

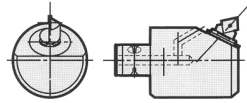
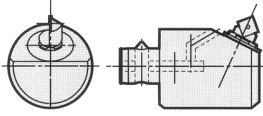
GA 23A-60-MF 25	258,00
GA 27A-60-MF 25	238,00
GA 36A-60-MF 32	278,00
GA 46A-60-MF 40	298,00
GA 53A-60-MF 40	298,00
GA 67A-60-MF 50	326,00
GA 93A-60-MF 63	374,00
GA 131A-60-MF 63	433,00
GA 169A-60-MF 63	518,00
GA 188A-60-MF 63	572,00



WFU®	EURO
------	------

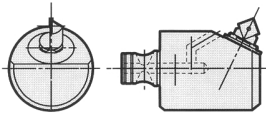
GA 23A-60-WFU 24	291,00
GA 27A-60-WFU 24	268,00
GA 36A-60-WFU 32	308,00
GA 46A-60-WFU 40	335,00
GA 53A-60-WFU 40	335,00
GA 67A-60-WFU 50	367,00
GA 93A-60-WFU 63	420,00
GA 131A-60-WFU 63	487,00
GA 169A-60-WFU 63	583,00
GA 188A-60-WFU 63	644,00

Bohrstangen/ Boring Bars (ABS[®], Mod-Flex, WFU[®])



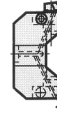
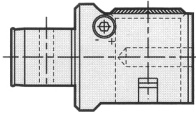
ABS[®]	EURO
MB 21B-60-ABS 25	241,00
MB 28B-60-ABS 25	221,00
MB 37B-60-ABS 32	246,00
MB 46B-60-ABS 40	258,00
MB 65B-60-ABS 50	287,00
MB 88A-60-ABS 63	331,00
MB 115A-60-ABS 63	375,00
MB 142A-60-ABS 63	433,00
MB 169A-60-ABS 63	506,00
MB 196A-60-ABS 63	586,00

Mod-Flex	EURO
MB 21B-60-MF 25	193,00
MB 28B-60-MF 25	177,00
MB 37B-60-MF 32	197,00
MB 46B-60-MF 40	206,00
MB 65B-60-MF 50	230,00
MB 88A-60-MF 63	365,00
MB 115A-60-MF 63	300,00
MB 142A-60-MF 63	346,00
MB 169A-60-MF 63	405,00
MB 196A-60-MF 63	469,00



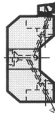
WFU[®]	EURO
MB 21B-60-WFU 24	217,00
MB 28B-60-WFU 24	199,00
MB 37B-60-WFU 32	221,00
MB 46B-60-WFU 40	232,00
MB 65B-60-WFU 50	258,00
MB 88A-60-WFU 63	298,00
MB 115A-60-WFU 63	338,00
MB 142A-60-WFU 63	390,00
MB 169A-60-WFU 63	455,00
MB 196A-60-WFU 63	527,00

Bohrstangen/ Boring Bars



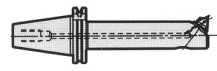
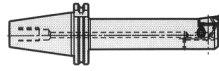
	EURO
MGAG-05-ABS 50	909,00
MGAG-07-ABS 63	1.114,00
MGAG-05-MF 50	727,00
MGAG-07-MF 63	891,00
MGAG-05-WFU 50	818,00
MGAG-07-WFU 63	1.003,00

	EURO
GA 207A-100-ADE 32	708,00
GA 245A-100-ADE 32	814,00
GA 283A-100-ADE 32	851,00
GA 321A-100-ADE 32	951,00



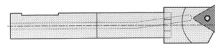
	EURO
MB 215A-60-ADE 32	581,00
MB 253A-60-ADE 32	688,00
MB 291A-60-ADE 32	726,00
MB 329A-60-ADE 32	826,00

Bohrstangen/ Boring Bars



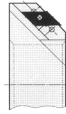
	EURO
GID40M-GA23A-130	369,00
GID40M-GA27A-130	365,00
GID40M-GA36A-150	380,00
GID40M-GA46A-160	411,00
GID40M-GA53A-160	411,00
GID40M-GA67A-180	448,00
GID40M-GA93A-140	485,00
GID40M-GA23A-130	438,00
GID40M-GA27A-130	424,00
GID40M-GA36A-150	431,00
GID40M-GA46A-160	448,00
GID40M-GA53A-160	448,00
GID40M-GA67A-180	475,00
GID40M-GA93A-180	518,00

	EURO
GID40M-MB21B-130	284,00
GID40M-MB28B-130	284,00
GID40M-MB37B-150	305,00
GID40M-MB46B-160	317,00
GID40M-MB65B-160	329,00
GID50M-MB21B-130	338,00
GID50M-MB28B-130	338,00
GID50M-MB37B-150	359,00
GID50M-MB46B-160	368,00
GID50M-MB65B-180	379,00



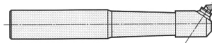
	EURO
AS10-03-01	28,10
AS10-05-01	28,40
AS10-07-01	30,80
ASH10-08-02T06	171,00
ASH10-11-03T06	171,00
ASH10-14-03T11	174,00
ASH10-17-03T11	178,00
ASH10-20-03T11	182,00
ASH10-23-03T11	199,00
AS16-12-03T06	125,00
AS16-17-03T11	135,00
AS16-22-03T11	151,00
AS16-27-03T11	159,00
AS16-32-03T11	165,00
ASH16-12-03T06	290,00
ASH16-17-03T11	301,00
ASH16-22-03T11	307,00
ASH16-27-03T11	312,00
ASH16-32-03T11	318,00

Fasringe/ Chamfer Rings



	EURO
FRG-2045-01	78,10
FRG-2545-01	78,10
FRG-3245-01	81,90
FRG-4045-01	95,50
FRG-5045-01	99,30
FRG-6345-01	112,00

Bohrstangen/ Boring Bars



	EURO
ZS20K-51	190,00
ZS20K-52	190,00
ZS20K-53	190,00
ZS20K-54	201,00
ZS20K-55	220,00

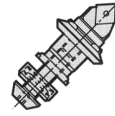
GA Feinbohrereinheiten/ GA Fine Boring Units



	EURO
M022-BS095-T06-50GA	214,00
M022-0L095-T06-50GA	214,00
M032-0L095-T06-50GA	214,00
M052-BS095-TC-50GA	245,00
M052-0L095-TC-50GA	245,00
M052-1L095-TC-50GA	245,00
M072-0L095-TC-100GA	282,00
M072-0L095-TC-100	242,00

Feinbohrereinheiten/ Fine Boring Units

SUCO Ersatzpatronen (gelötete Ausführung)/
SUCO Replacement cartridges (brazed version)



Patronen/ Cartridges

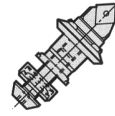
Bestell-Nr./ Order no.		Stück/ Piece (EURO)		
		1 - 11	12 - 23	24 - 47
M1A2	M1A2412	33,00	32,20	31,30
M1B212	M1B2412			
M1A212	M1A24			
M1B212	M1B24			
M2A2	M2A2412	36,10	35,20	34,40
M2B212	M2B2412			
M2A212	M2A2L12			
M2B212	M2B2L12			
M2A2L	M2A24			
M2B2L	M2B24			
M3A2	M3A2412	40,40	39,20	38,60
M3B212	M3B2412			
M3A212	M3A2L12			
M3B212	M3B2L12			
M3A2L	M3A24			
M3B2L	M3B24			

Einheiten/ Units

Bestell-Nr./ Order no.		Stück/ Piece (EURO)	
		1 - 11	12 - 23
M1A2	M1A2412	45,50	44,70
M1B212	M1B2412		
M1A212	M1A24		
M1B212	M1B24		
M2A2	M2A2412	53,50	52,60
M2B212	M2B2412		
M2A212	M2A2L12		
M2B212	M2B2L12		
M2A2L	M2A24		
M2B2L	M2B24		
M3A2	M3A2412	59,70	58,50
M3B212	M3B2412		
M3A212	M3A2L12		
M3B212	M3B2L12		
M3A2L	M3A24		
M3B2L	M3B24		

Feinbohrheitenen/ Fine Boring Units

SUCO Ersatzpatronen (zur Aufnahme von Wendepplatten)/
SUCO Replacement cartridges (for indexable inserts)



Patronen/ Cartridges

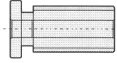
Bestell-Nr./ Order no.				Stück/ Piece (EURO)		
				1 - 11		12 - 23
M2B2-E04	M2A2-E04	z.B. M2B2-E04	124,00		121,00	
M3A2						
M3B2						
M3A2L	V	z.B. M3A2V	124,00		121,00	
M3B2L	CC	z.B. M3A2C06	119,00		114,00	
	V	z.B. M5B2V	124,00		121,00	
	CC	z.B. M5B2C06	121,00		115,00	
	TC	z.B. M5B2TC	121,00		115,00	
	V	z.B. M7A2V	171,00		168,00	
	CC	z.B. M7A2C06	169,00		163,00	
	TC	z.B. M7A2TC	169,00		163,00	
	V	z.B. M10A2V	192,00		188,00	
	CC	z.B. M10A2C12	188,00		183,00	
	TC	z.B. M10A2TC	188,00		183,00	

Einheiten/ Units

Bestell-Nr./ Order no.				Stück/ Piece (EURO)		
				24 - 47		
M2B2-E04	M2A2-E04	z.B. M2B2-E04	141,40			
M3A2						
M3B2						
M3A2L	V	z.B. M3A2V	143,30			
M3B2L	CC	z.B. M3A2C06	138,30			
	V	z.B. M5B2V	147,00			
	CC	z.B. M5B2C06	144,00			
	TC	z.B. M5B2TC	144,00			
	V	z.B. M7A2V	168,00			
	CC	z.B. M7A2C06	163,00			
	TC	z.B. M7A2TC	163,00			
	V	z.B. M10A2V	188,00			
	CC	z.B. M10A2C12	183,00			
	TC	z.B. M10A2TC	183,00			

Ersatzteile, Zubehör/ Spare parts, Accessories

Schnecken/ Worm Screw



	EURO
NR.2821(F.GR.M02)	46,60
NR.3821(F.GR.M02)	53,40
NR.5821(F.GR.M02)	60,30
NR.7821(F.GR.M02)	67,30

Befestigungsschraube/ Insert Screw



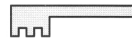
	EURO
A-5016	3,10
C02505	4,90
C02506	4,90
C04008	5,20
C05012	4,90
D-4008	3,00
D-4010	3,00
D-4011	3,00
D-4012	3,00
F2004T	2,30
CSTB2	2,10

Doppelgabelschlüssel/ Spanner



	EURO
DS-1	6,10
DS-2	6,10
DS-3	6,40
DS-5	8,80
DS-7-10	12,10

Spares-Schlüssel/ Torque key



	EURO
G02	8,80
SKSS-2	0,30
SKSS-2,5	0,30
SKSS-4	0,30
SKSS-6	0,90
SKSS-8	1,60
TX-6	7,20
TX-7	7,20
TX-8	7,20
TX-15	8,70

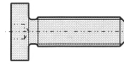
Ersatzteile, Zubehör/ Spare parts, Accessories

Verstell Schlüssel/ Wrench



	EURO
MGAG-03	17,00
MGAG-05	17,00

Verstell Schlüssel/ Screw



	EURO
MTP-28-2	7,50
MTP-50-2	7,50
MTP-135-2	7,50

Federscheibe/ Spring Washer



	EURO
MTP-28-15	0,90
MTP-36-15	1,40
MTP-50-15	0,50
MTP-75-15	0,70
MTP-135-15	0,70

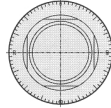
Klemmbolzen/ Insert Screw



	EURO
NLM-12.7/NLM46	17,40
NLM-19./NLM68	23,30
NLM-6.5/NLM23	16,60
NLM-9.525/NLM33	16,80
NLM-9.525/NLM34L	16,60

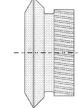
Ersatzteile, Zubehör/ Spare parts, Accessories

Skalenkonen/ Dial



	EURO
SK1-40	12,30
SK1-50	12,30
SK2-40	12,80
SK2-50	12,80
SK3-40	14,80
SK3-50	14,80
SK5-40	17,60
SK5-50	17,60
SK7-80	24,50
SK7-100	24,50
SK10-80	32,80
SK10-100	32,80

GA Skalenkonen/ GA Dial



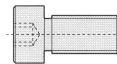
	EURO
5855	59,60
7860	66,70

Gegenhalterringe/ Spring disc



	EURO
CB 8x3.2x0.5	4,40
CB 10x4.2x0.6	4,10
GRE05	4,20
GRE07	5,20
GRE10	6,60

Anzugsschrauben/ Allen Screw



	EURO
M3	0,20
M4	0,40
M6	1,20
M10	1,70
M12	2,40

Ersatzteile, Zubehör/ Spare parts, Accessories

Unterlegplatte/ Shim



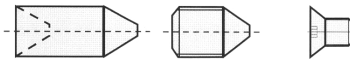
	EURO
SSn-120408	12,30
SSn-190408	21,30
TSN-160308/12	9,10
TSN-220408	15,20
T23.19-621	12,60

Klemmschraube/ Insert Screw



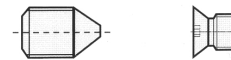
	EURO
TXS M2x4	2,70
214.80.800	3,10
5513-020-01	3,10
5513-020-03	3,10
5513-020-17	6,40
5513-020-27	3,90

ABS® Schraube und Stift/ ABS® Screw and pin



	EURO
Ersatzteile für Hülsen	
ABS 25-FS-W	26,10
ABS 32-FS-W	26,10
ABS 40-FS-W	27,70
ABS 50-FS-W	32,00
ABS 63-FS-W	34,00
ABS 80-FS-W	37,30
ABS 100-FS-W	41,00
Ersatzteile für Zapfen	
ABS 25-ES-M	31,90
ABS 32-ES-M	38,80
ABS 40-ES-M	38,80
ABS 50-ES-M	43,70
ABS 63-ES-M	45,70
ABS 80-ES-M	46,80
ABS 100-ES-M	51,60

Mod-Flex Schraube/ Mod-Flex Screw



Größe/ Size	Locking Screw	EURO
Ersatzteile für Zapfen (2 Screw)		
025	025 MF 270001	12,80
032	032 MF 270002	12,80
040	040 MF 270003	12,80
050	050 MF 270004	12,80
063	063 MF 270005	13,90
080	080 MF 270006	15,70
100	100 MF 270007	21,20
Ersatzteile für Hülsen		
025	025 MF 270188	7,50
032	032 MF 270189	7,50
040	040 MF 270190	8,40
050	050 MF 270191	8,40
063	063 MF 270192	8,40
080	080 MF 270193	12,25
100	100 MF 270194	14,70

WFU® Ersatzteile, Zubehör/ WFU® Spare parts, Accessories

WFU® Wuchtset* aus Stahl/
Set steel elements for balancing*

WG30



Größe/ Size	Bestell-Nr./ Order no.	EURO
WFU 40-25	WFU-WUCHTSET M6/M3 STA	18,00
WFU 40-26	WFU-WUCHTSET M8/M4 STA	20,00
WFU 40-27	WFU-WUCHTSET M10/M5 STA	22,00
WFU 40-28	WFU-WUCHTSET M10/M5 STA	22,00

WFU® Wuchtset* aus Aluminium/
Set of Aluminium elements for balancing*

WG30



Größe/ Size	Bestell-Nr./ Order no.	EURO
WFU 40-25	WFU-WUCHTSET M6/M3 ALU	18,00
WFU 50-32	WFU-WUCHTSET M8/M4 ALU	20,00
WFU 63-40	WFU-WUCHTSET M10/M5 ALU	22,00
WFU 80-40	WFU-WUCHTSET M10/M5 ALU	22,00

* Zum Gebrauchsmuster in Deutschland angemeldet/ Registered design in Germany.

WFU® Ersatzteile, Zubehör/ WFU® Spare parts, Accessories

Verwendung: Universellen Feinwuchten mit WF-Wuchtelementen* an allen WFU Adaptern einfach und beliebig oft möglich./

Application: Universal balancing with WF balancing elements is simple and can be carried out as often as required.*

**Wuchtschraube/
Screw for balancing**

**Sicherungsstifte
Locking pin**

Bestell-Nr./ Order no.	Inhalt (Stück)/ Content (piece)	Stück/ Piece	Größe/ Size	Stück/ Piece	Größe/ Size
WFU-WUCHTSET M6/M3	32	6	M6 x 6	6	M3 x 10 - DIN914
				6	M3 x 12 - DIN914
				6	M3 x 14 - DIN914
				6	M3 x 16 - DIN914
WFU-WUCHTSET M8/M4	26	6	M8 x 7.5	6	M4 x 10 - DIN914
				6	M4 x 14 - DIN914
				6	M4 x 16 - DIN914
WFU-WUCHTSET M10/M5	26	6	M10 x 8	6	M5 x 14 - DIN914
				6	M5 x 18 - DIN914
				6	M5 x 25 - DIN914

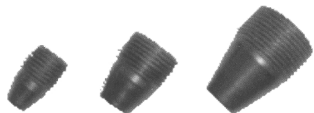
**Bedienungsschlüssel
Service key**

Bestell-Nr./ Order no.	Inhalt (Stück)/ Content (piece)	Stück/ Piece	Typ/ Type
WFU-WUCHTSET M6/M3	32	1	Wuchtschlüssel
		1	Große 1
		1	Sechskantschlüssel
			1.5 mm
WFU-WUCHTSET M8/M4	26	1	Wuchtschlüssel
		1	Große 2
		1	Sechskantschlüssel
			2 mm
WFU-WUCHTSET M10/M5	26	1	Wuchtschlüssel
		1	Große 1
		1	Sechskantschlüssel
			2.5 mm

WFU® Ersatzteile, Zubehör/ WFU® Spare parts, Accessories

WFU® Kugelgewindestifte/
Threaded taper pins

WG30



Größe/ Size	Bestell-Nr./ Order no.	EURO
WFU 40-25	WFU-SCHRAUBE M10 X 1	5,00
WFU 50-32	WFU-SCHRAUBE M14 X 1	5,50
WFU 63-40	WFU-SCHRAUBE M18 X 1	6,00
WFU 80-40	WFU-SCHRAUBE M18 X 1	6,00



Präzisionswerkzeuge aus BERLIN, das heißt:
QUALITÄT. – Diamantwerkzeuge aus BERLIN, das
heißt: **SUCO**. Im Jahre 1962 wurde die Firma **SUCO** als
Schmitz & Co., Hersteller von Diamantwerkzeugen, in Berlin
gegründet. Der hohe Qualitätsstandard trug schnell dazu bei, den
Namen **SUCO** in Fachkreisen einen Begriff werden zu lassen. Durch
intensive Weiterentwicklung der Produkte, Verbesserung der Qualitäts-
maßstäbe sowie eine Erweiterung der Produktionspalette hat sich
die Firma **SUCO** einen festen Platz in der Industrie gesichert.
Diesen Standard zu halten und noch zu verbessern, ist auch
für die Zukunft unser Ziel. – Diamantwerkzeuge waren
schon immer Vertrauenssache. – Vertrauen Sie
uns und unserer Kompetenz. Unsere
Erfahrung geben wir gerne an Sie
weiter. **SUCO**: Ihr Partner für
Diamantwerkzeuge.



SUCO DiamantWerkzeuge
Schmitz u. Co. Produktions GmbH
Hohefeldstraße 35, 13467 Berlin-Hermsdorf
Telefon: +49 30 4045057 | Telefax: +49 30 4040641
E-Mail: schmitz@suco-diamonds.de
Internet: www.suco-diamonds.de